

# MONTHLY MEMBERSHIP PROGRESS REPORT

LOCATION NEPAL

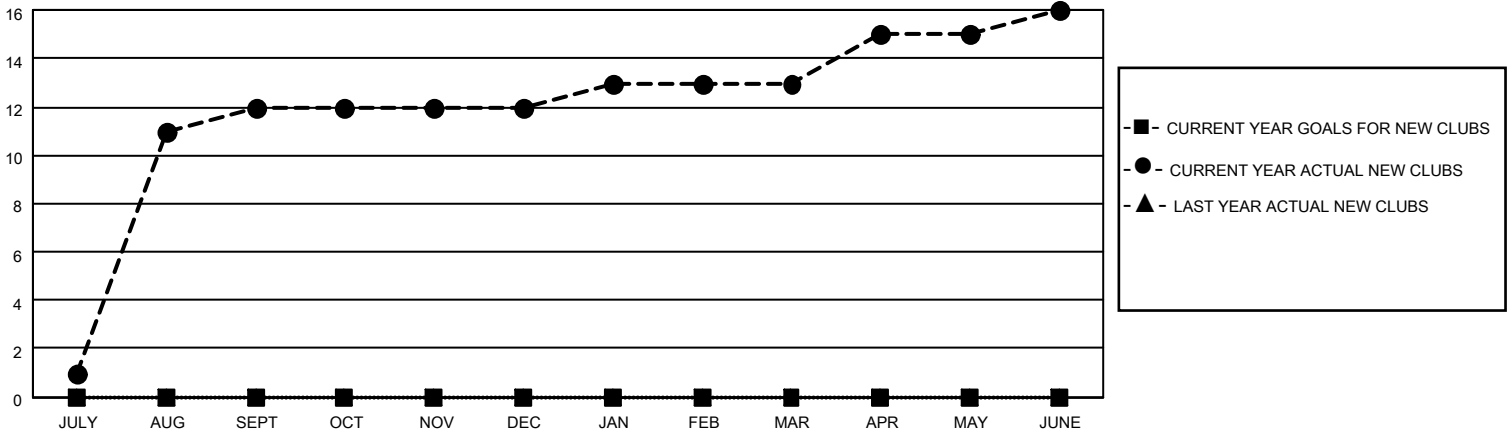
District 325 C

Results as of: 6/30/2023

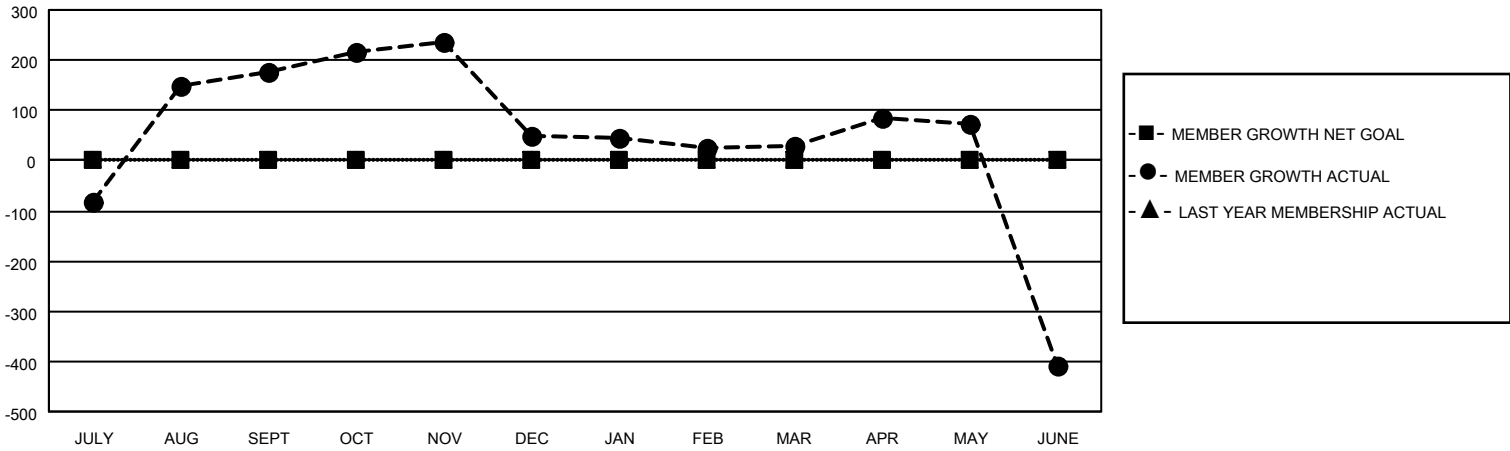
Clubs			
RESULTS FOR 2022-2023			
QUARTER	NEW CLUB GOAL	NEW CLUBS	DROPPED CLUBS
JULY/AUG/SEPT	0	12	0
OCT/NOV/DEC	0	0	10
JAN/FEB/MAR	0	1	4
APR/MAY/JUNE	0	3	4

Members			
RESULTS FOR 2022-2023			
QUARTER	MEMBER GROWTH NET GOAL	MEMBER GROWTH ACTUAL	DROPPED MEMBERS ACTUAL (including transfers)
JULY/AUG/SEPT	0	571	261
OCT/NOV/DEC	0	79	203
JAN/FEB/MAR	0	88	90
APR/MAY/JUNE	0	203	624

**GOALS AND ACTUAL NEW CLUBS CUMULATIVE**



**GOALS AND ACTUAL MEMBERS CUMULATIVE**



**DROPPED CLUBS: 18**

**95 CLUBS OF 171 ADDED 1 OR MORE NEW MEMBERS**

**GENDER DISTRIBUTION**

MALE	2,415 (70.00%)
FEMALE	1,034 (29.97%)
NON BINARY	1 (0.03%)
PREFER NOT TO ANSWER	0 (0.00%)

**DROPPED MEMBERS**

[CLICK HERE FOR CUMULATIVE MEMBERSHIP DATA](#)

DECEASED	8
CLUB CANCELLED	278
OTHER	892
<b>TOTAL</b>	<b>1,178</b>

TOTAL FAMILY UNIT MEMBERS 2,871

FAMILY MEMBERS PAYING HALF DUES 2,136